

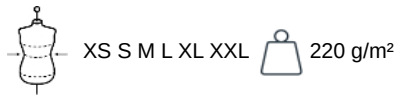
# KARIBAN

K386

## Ladies long-sleeved Breton stripe top

- Classic and timeless sailor top.
- Modern fit for a chic, casual look.
- Sailing Collection. Made from 100% cotton.

100% cotton. 1x1 rib. Crew neck. Contrast stitch detail on shoulder. Side slits.

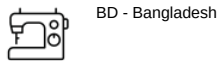


### More information

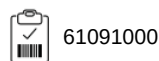
#### Logistic



#### Country of origin



#### Customs code



### Also available in version



K366

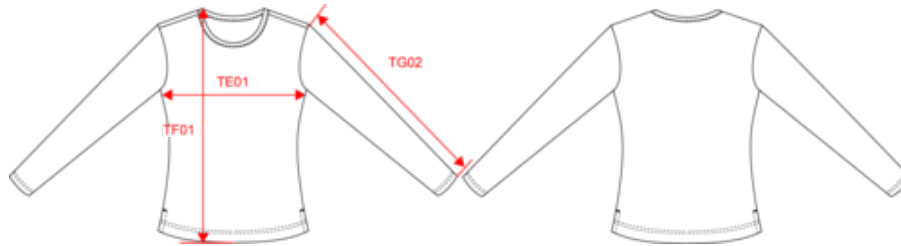


# KARIBAN

K386

Ladies  long-sleeved Breton stripe top

Dimensions (cm)



Measurements in cm	XS	S	M	L	XL	XXL
TE01 - 1/2 chest width at 1.5cm below armhole	39.00	42.00	45.00	48.00	51.00	54.00
TF01 - Total height from HSP	59.00	61.00	63.00	65.00	67.00	69.00
TG02 - Long sleeve length	58.25	59.25	60.25	61.25	62.25	63.25

# KARIBAN

K386

Ladies  long-sleeved Breton stripe top

## Colours information



**Navy**

RVB : 41,46,56  
Pantone C : 433C  
Pantone TCX : 19-4012TCX

**White Stripes**

RVB :  
Pantone C : 433C / White  
Pantone TCX : 19-4012TCX / 11-0601TCX



**White**

RVB : 236,236,252  
Pantone C : White  
Pantone TCX : 11-0601TCX

**Navy Stripes**

RVB :  
Pantone C : White / 433C  
Pantone TCX : 11-0601TCX / 19-4012TCX

Logisti



10



30

Sizes	Width (cm)	Height (cm)	Length (cm)	Net weight (kg)	Gross weight (kg)	Pieces/Box	Pieces/Bundle
XS	40.00	15.00	60.00	0.00000	0.00000	30	0
S	40.00	15.00	60.00	0.00000	0.00000	30	0
M	40.00	15.00	60.00	0.00000	0.00000	30	0
L	40.00	18.00	60.00	0.00000	0.00000	30	0
XL	40.00	18.00	60.00	0.00000	0.00000	30	0
XXL	40.00	18.00	60.00	0.00000	0.00000	30	0